

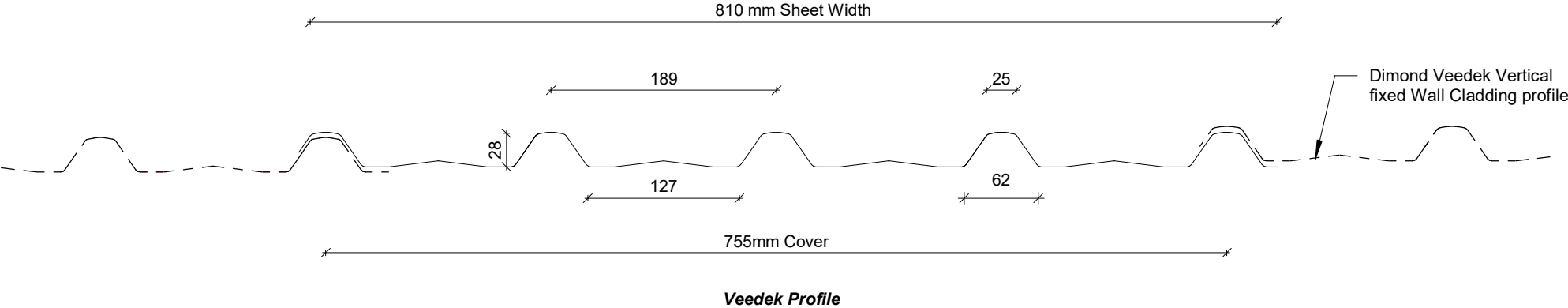
COMMERCIAL HORIZONTAL WALL CLADDING

DETAILS:

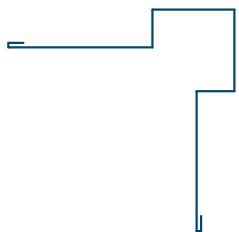
REV: DATE:

VCHC00	Cover Sheet	1	Oct 2025
VCHC01	Profile Summary	1	Oct 2025
VCHC02	Typical Flashing Detail	1	Oct 2025
VCHC03	Barge Detail	1	Oct 2025
VCHC04	Wall to Roof Transverse Detail	1	Oct 2025
VCHC05	Wall to Roof Detail	1	Oct 2025
VCHC06	Box Gutter Detail	1	Oct 2025
VCHC07	Wall to Roof Apex Detail	1	Oct 2025
VCHC08	External Corner Detail	1	Oct 2025
VCHC09	Internal Corner Detail	1	Oct 2025
VCHC10	Base Detail	1	Oct 2025
VCHC11	Window / Door Head Detail	1	Oct 2025
VCHC12	Window / Door Jamb Detail	1	Oct 2025
VCHC13	Window Sill Detail	1	Oct 2025

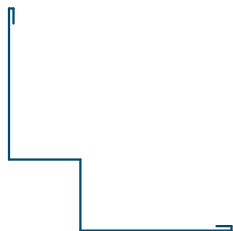
PROFILE OVERVIEW	
RIB TYPE	Low
RIBS PER SHEET	5 Ribs per sheet
WIDTH	755mm Cover, 810mm Sheet



Profile Summary



External Corner Flashing



Internal Corner Flashing



Base Flashing



Window Sill Flashing



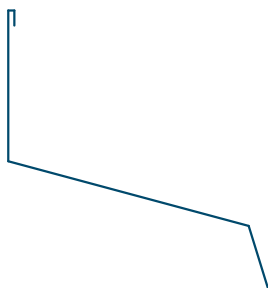
Window Head Flashing



Window Jamb Flashing



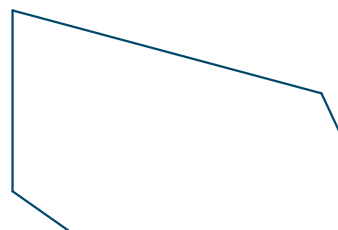
Eaves Flashing



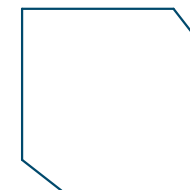
Wall to Roof Flashing 1



Wall to Roof Flashing 2



Wall Roof to Wall Apex Flashing



Barge Flashing

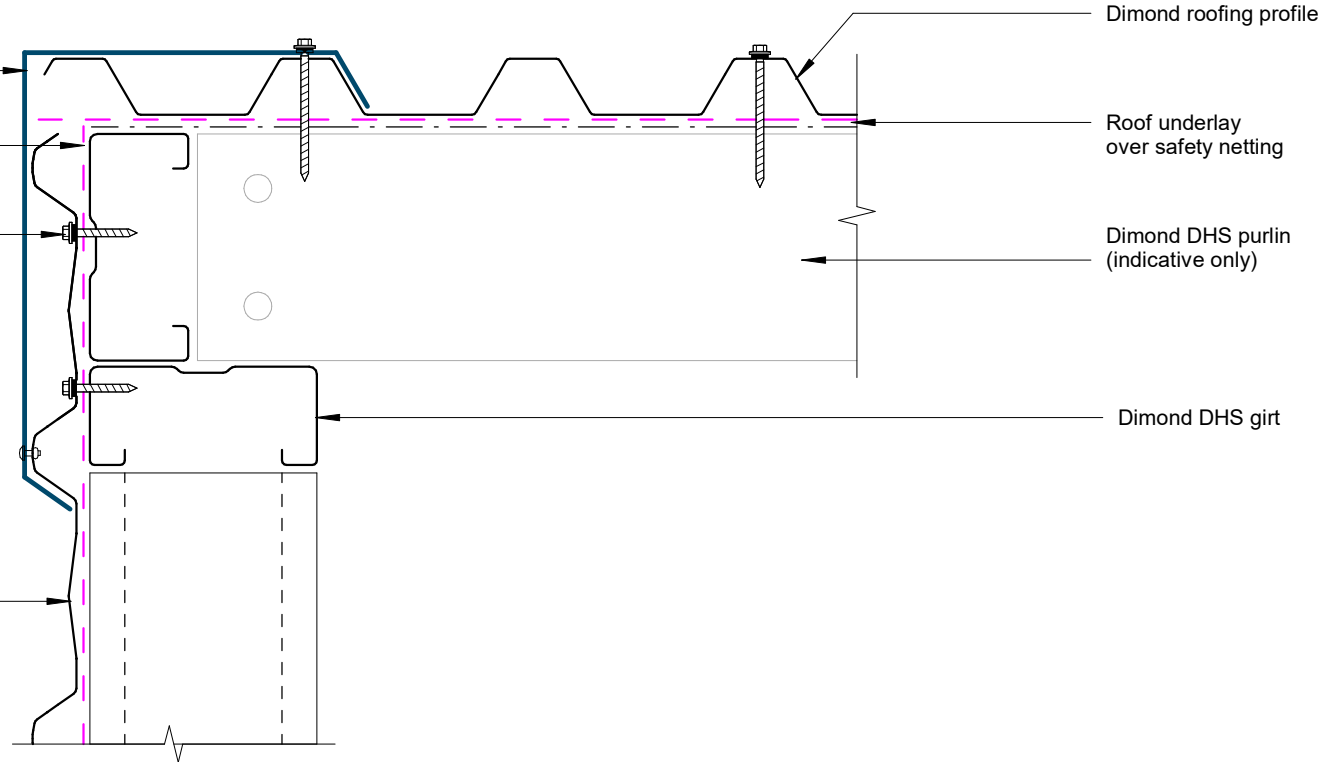
Typical Flashing Detail

Barge flashing to match roofing.
Materials & Fixings as per Dimond
Technical Data & MRM Code of Practice

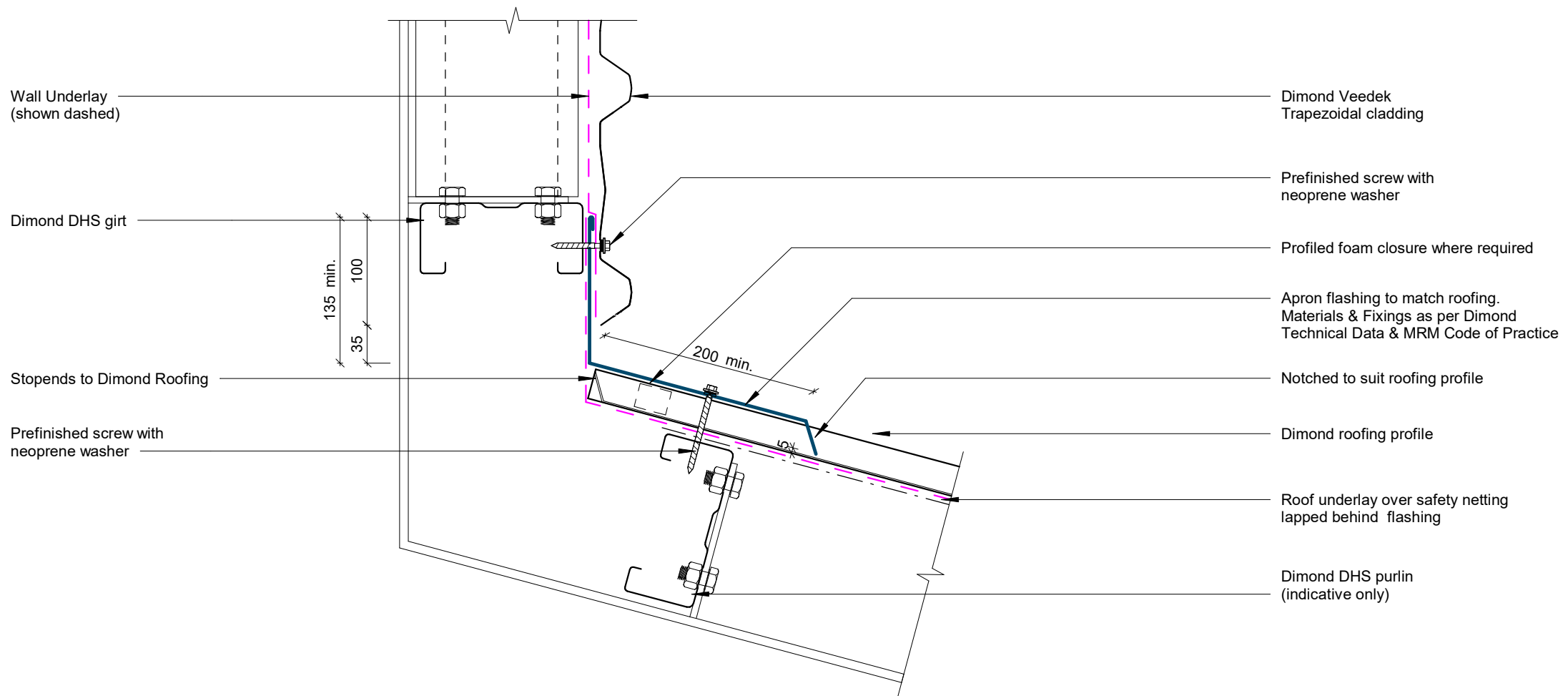
Wall Underlay
(shown dashed)

Prefinished screw with
neoprene washer

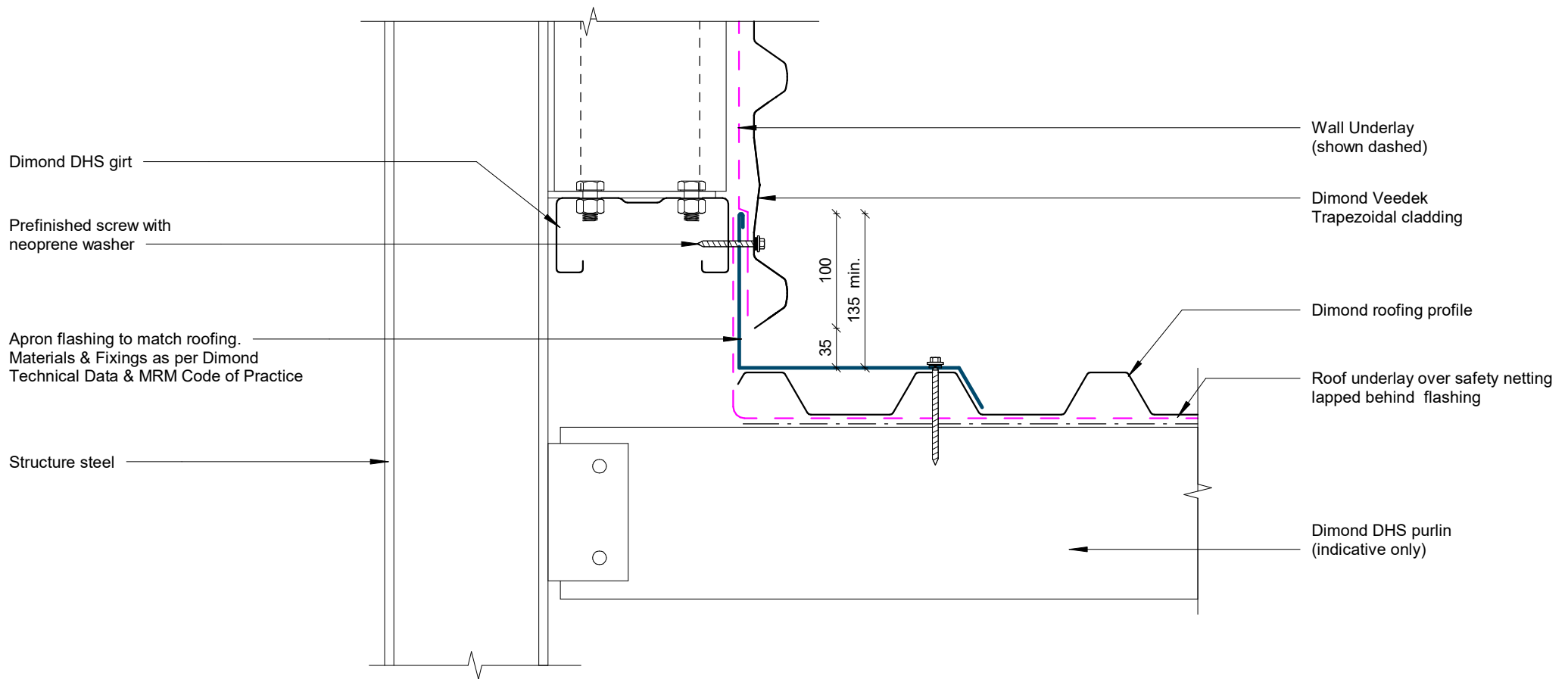
Dimond Veedek
Trapezoidal cladding



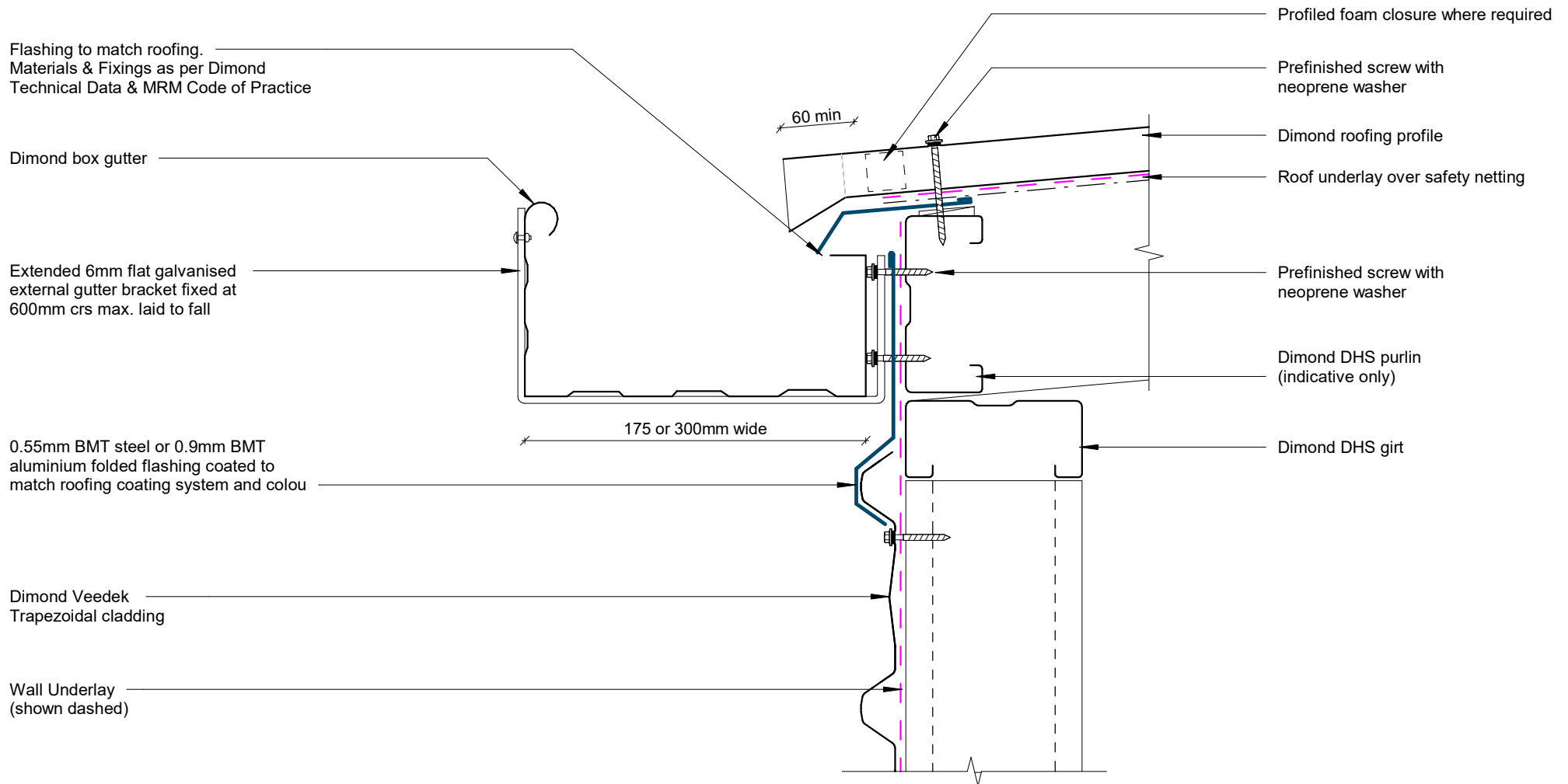
Barge Detail



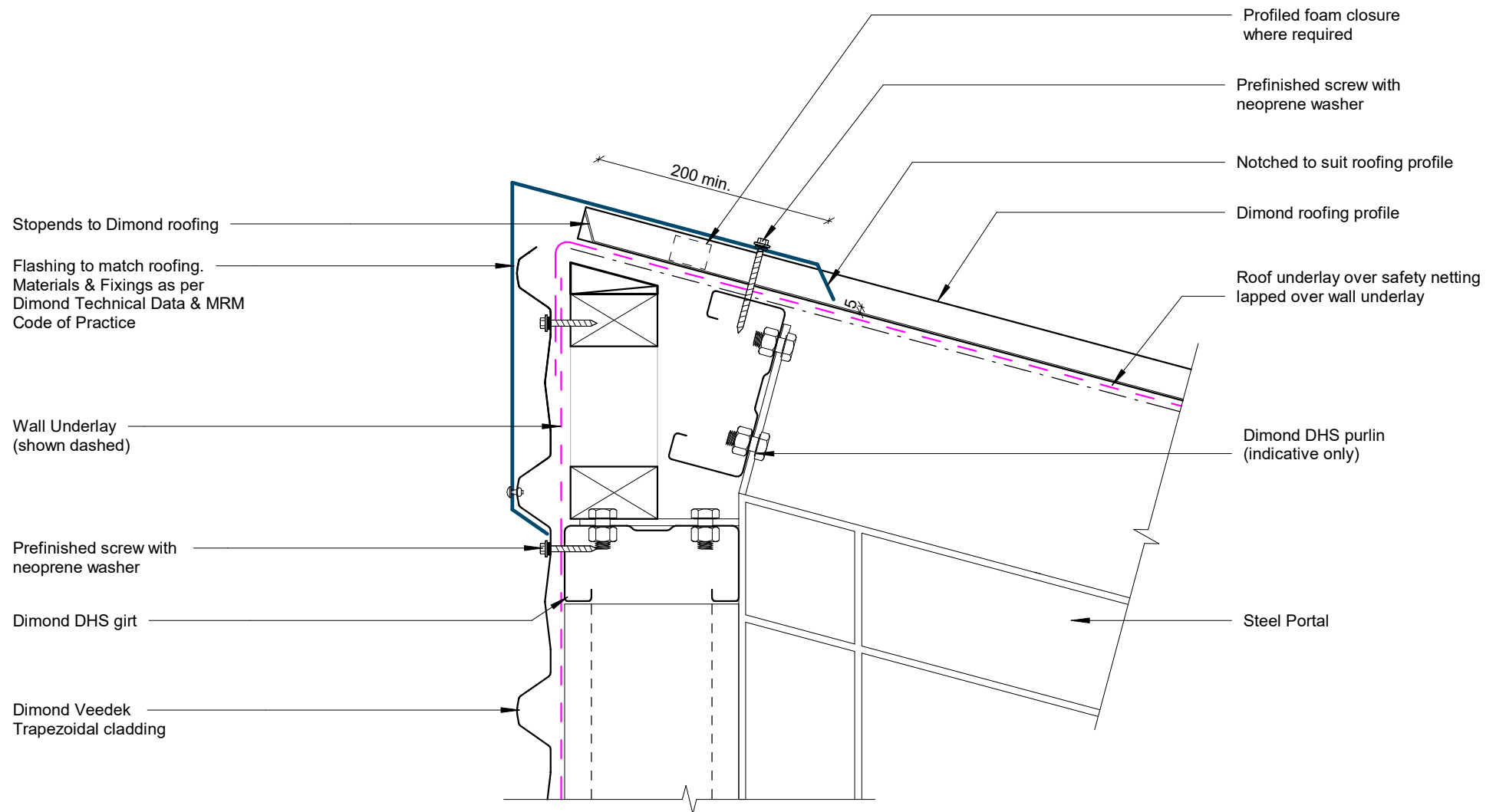
Wall to Roof Transverse Detail



Wall to Roof Detail



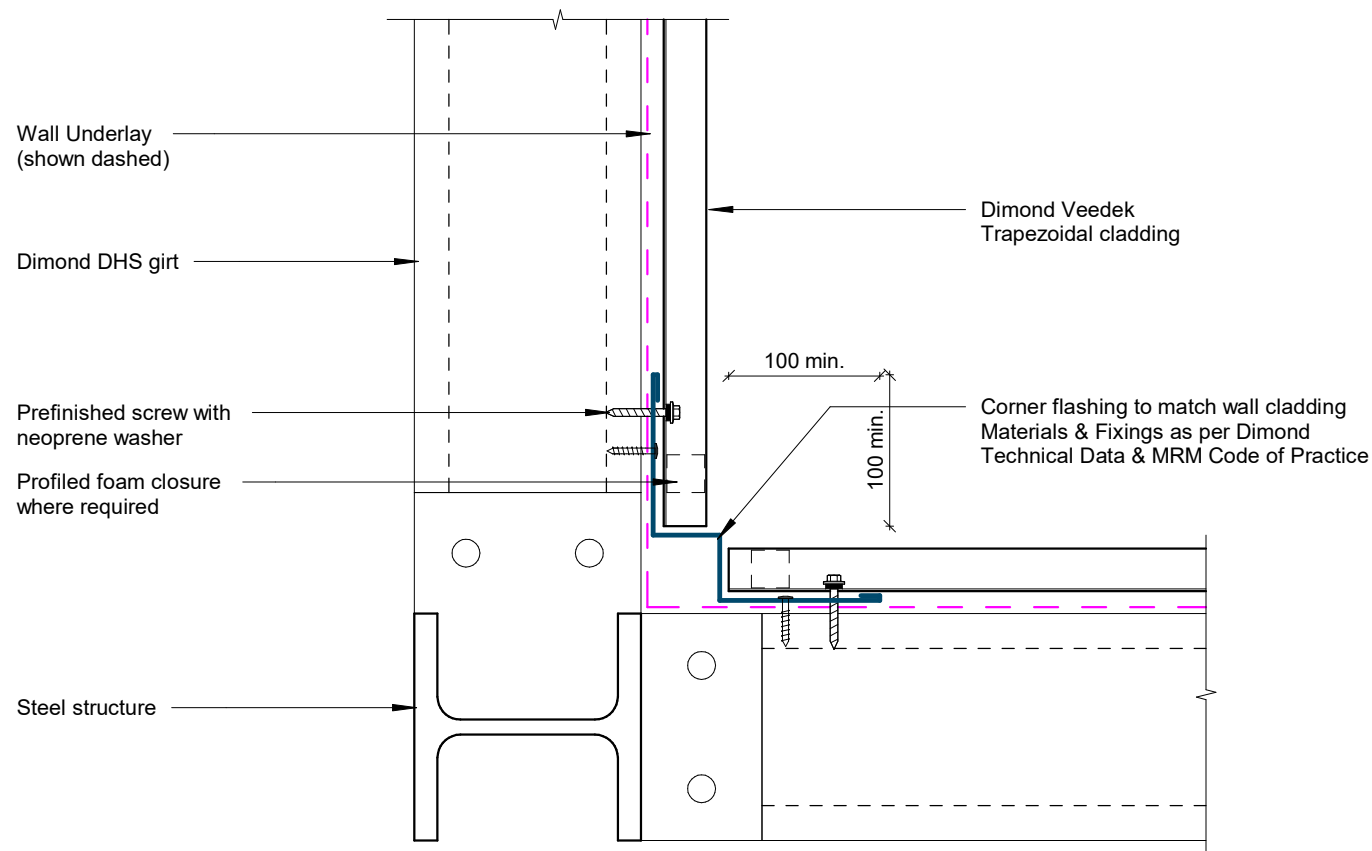
Box Gutter Detail



Wall to Roof Apex Detail

Rev: 1

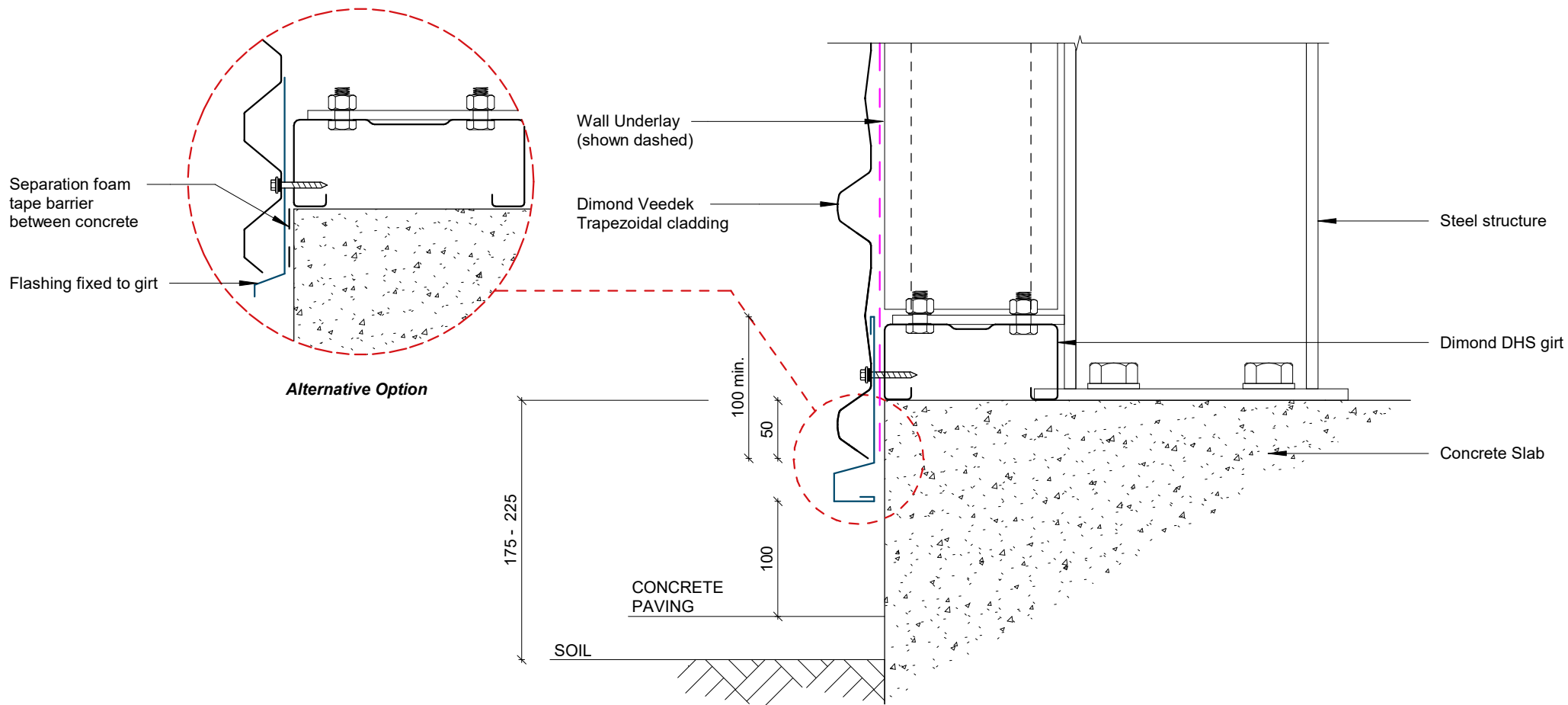
Veedek Commercial Horizontal Cladding



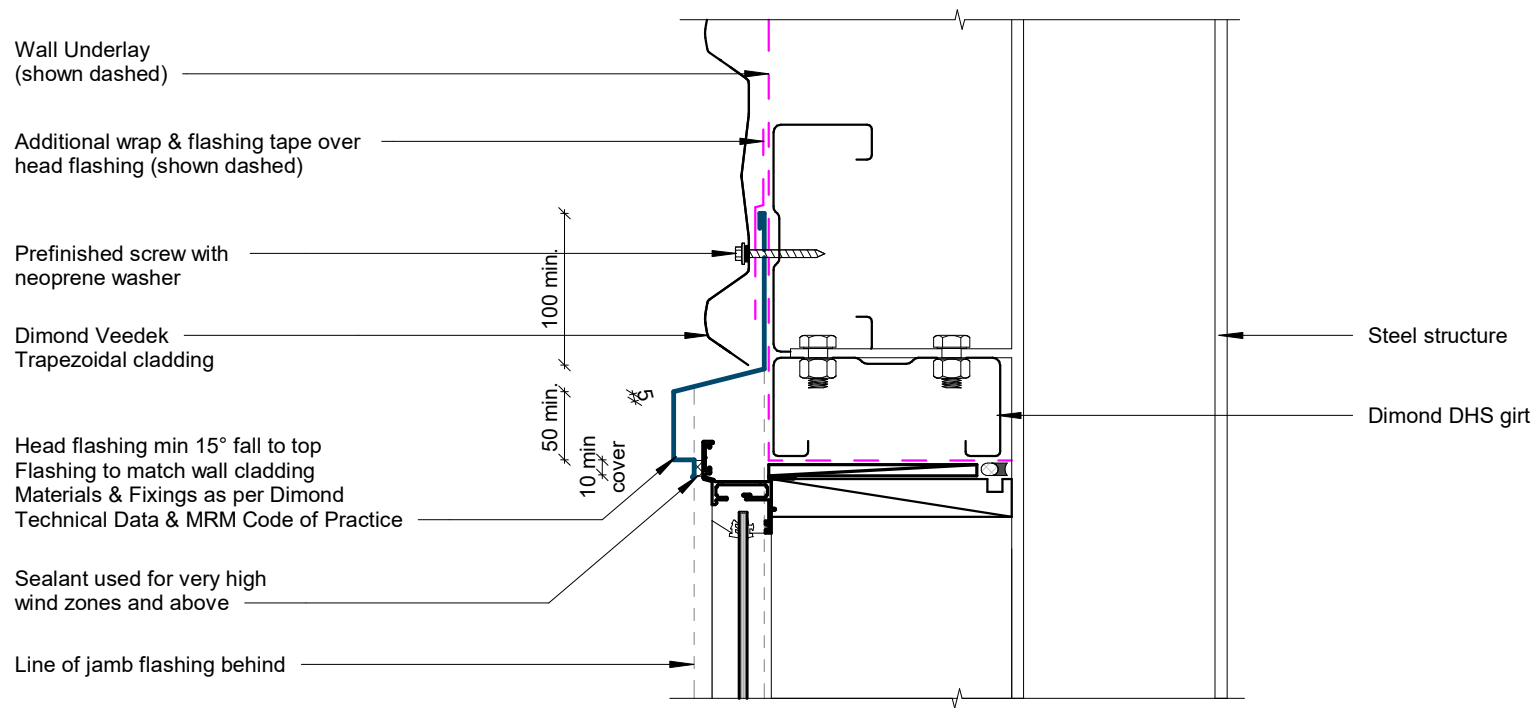
Internal Corner Detail

Rev: 1

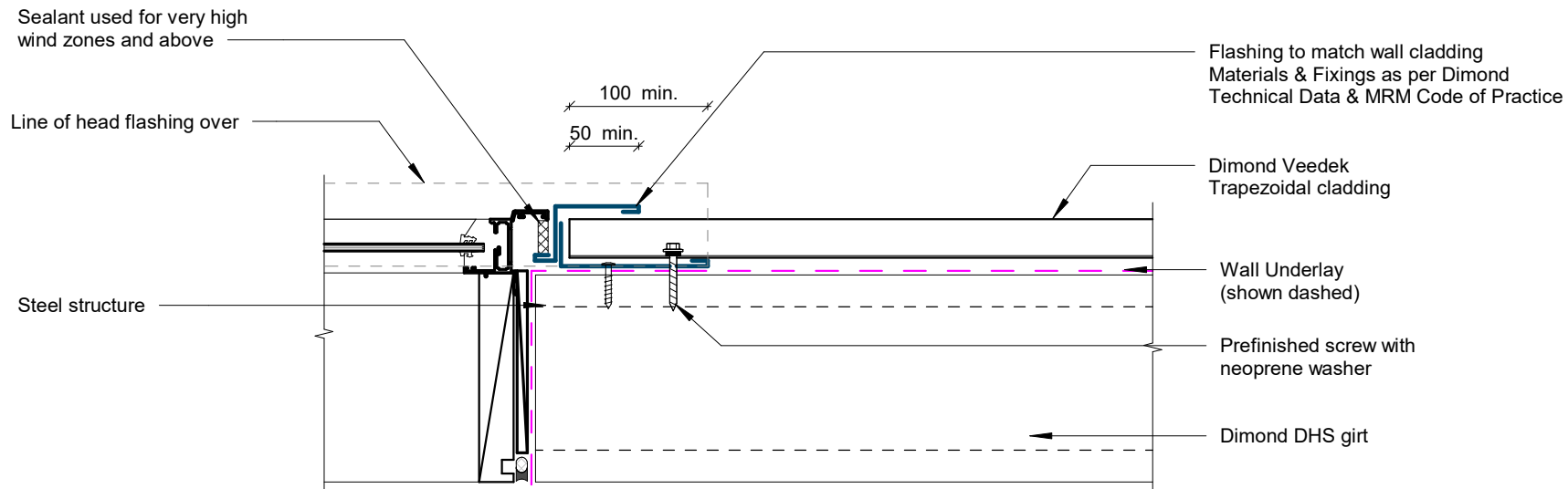
Veedek Commercial Horizontal Cladding



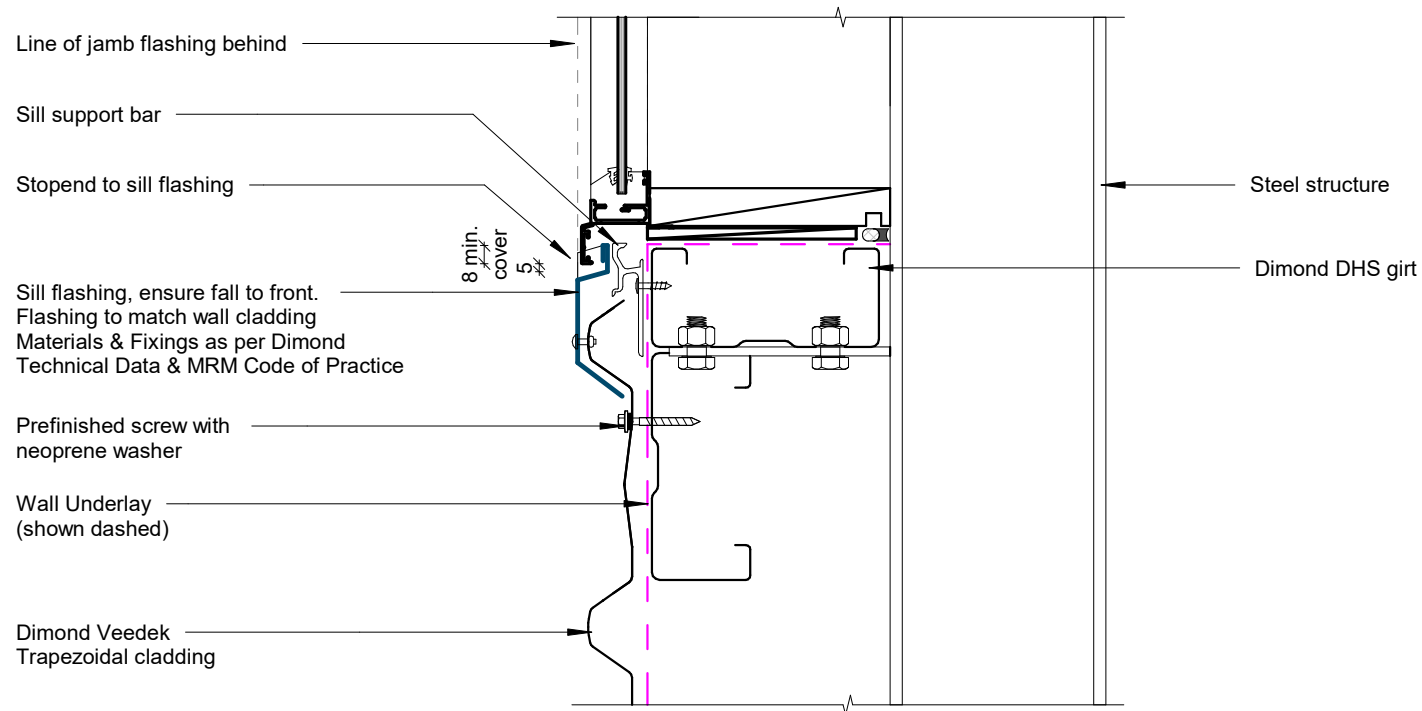
Base Detail



Window / Door Head Detail



Window / Door Jamb Detail



Window Sill Detail